

2013

# ANNUAL REPORT







From the Senior Pastor.....	3
From the Clerk of Session .....	4
From the Moderator of the Board of Deacons .....	5
Worship Report.....	6
Care Report.....	7
Serve Report.....	8
Grow Report .....	9-10
Facilities Report.....	11
Finance Report.....	12
Celebrating Legacy Gifts .....	12
Investments, Income & Expenses .....	13
Fund Report.....	14
Governance Report .....	15
Membership Report .....	16
In Memoriam.....	16



# FROM THE SENIOR PASTOR

Sometimes it can be hard to measure the progress of a congregation. We can do it by the (approximate) numbers. In 2013:

- › 1,500 – Membership. After numerous letters were sent to members who have not been in church for a long, long time, to update our rolls.
- › 1,000 – Number of people missing a thrilling performance of the *Messiah* due to a weather cancellation in December, but over 800 celebrated “Doxology” in June, and hundreds hear and sing inspiring music every week.
- › 700 – Average worship attendance. Down a little in 2013 from 2012, but back up again in the first three months of 2014.
- › 100 – Average number of people watching morning worship online. This has grown rapidly. 100 assumes one person per computer; though we know there are often 2 or more watching.
- › 20 – Percent increase of adult Sunday School attendance over 2012; children’s Sunday School and the nursery are also booming.
- › 9 – Members of the church appointed to the Strategic Planning Committee.
- › \$2,571,948 – Faith Giving in 2013. Higher than recent years but not enough to cover all the costs of funding the ministry in and through NPC.
- › 1 – Important room renovated (the parlor). Other spaces were updated, and sanctuary audio was digitized. Still more to do, including the bathrooms.



Numbers tell part of the story, but of course, in a community such as a church, not the whole story. For example, one key question we must always ask of our church: Is our love for, and discipleship of, Jesus Christ more faithful and radiant at the end of 2013 than it was when the year began? And another: Have we developed deeper relationships with others in the church over the course of the year so that the body of Christ is stronger? Or, a third: Have we found a place to serve (within the church or beyond) so that we are seen to be followers of a serving savior? These are questions not about the institution, but about “living the Christian Life” – and in the end, these are the questions that God will ask of us.

Of course, it’s really not an either/or scenario. Growth that really matters in our lives takes place when we focus on both areas. God cares about both communities and individuals. I trust you share with me in this double focus – and will continue to do so in the year ahead as we “grow together in every way into Christ our head” (Ephesians 4:13).

So glad to be your pastor!

A handwritten signature in black ink that reads "David Renwick". The script is fluid and cursive.

DR. DAVID RENWICK  
*Senior Pastor*

# FROM THE CLERK OF SESSION

In 2013, the Congregation met twice (May and October) to elect new officers and other positions, amend the bylaws of the Corporation, receive the annual report, and change the terms of call of Dr. Quinn Fox.

The Session convened thirteen times and decided to suspend for July instead of August henceforth. Session met in retreat for the second consecutive year and focused on changing patterns in the church. Session heard from Lovett Weems, Distinguished Professor of Church Leadership, Wesley Theological Seminary, and then met for the first time with the Strategic Planning Committee. Session had established the strategic planning process and appointed committee members at a special July 7 meeting.

The most important effort of the Clerk and Associate Clerk (Roma Samuel) in 2013 was a thorough culling of the membership roles as required by the Book of Order. This careful Session process began with 475 letters to “lost” members in March 2013 (102 of which do not live in the area any longer). Each person who didn’t respond later received a follow up letter. The results lead to a reduction of membership from 1,870 in February 2013 to 1,506 in December 2013.

## – 2013 HIGHLIGHTS –

- › Heard several reports on damage from the August 2011 earthquake and held a special meeting on November 17 to respond to the petition filed with the U.S. federal district court in Baltimore by NPC’s insurer, GuideOne, which is seeking a ruling that no payments to NPC are due under its earthquake insurance policy. Session approved the funding of legal expenses from the Freund Fund.
- › Moved seminarian Craig Meek from Inquirer to Candidacy status; took Bradley Lewis under care as an Inquirer.
- › Changed the status of Revs. Marsh and Taylor to “Associate Pastors Stated Supply.” Held a special meeting to ratify the recommendations of the Youth Director Search Committee and Personnel committee to retain McLane Stone as the new permanent Youth Director to replace interim Paul Lauerman. Designated Nancy Fox and Don Wilson as Parish Associates.
- › Approved construction in the Education Building to be funded solely by National Presbyterian School (NPS), contingent upon approval of the finances by the NPC Finance Council.
- › Approved a revised and updated Memorandum of Understanding with NPS.
- › Awarded the Duane Barney Leadership Award to Elder Clyde Taylor.
- › Approved a gift of \$10,000 to the Princeton Theological Seminary Bicentennial Campaign with monies from Canon Fund.



JOHN P. GREGG  
*Clerk of Session*

## THE SESSION

### CLASS OF 2014

- › Fred Byus
- › John Forlines
- › Sally Kaplan
- › Sue Lockwood
- › Roma Samuel
- › Glenn Schmitt
- › David Schottke

### CLASS OF 2015

- › Rudy de Leon
- › Margaret Gardner
- › Ellen Lawler
- › Emmy Lewis
- › David Mack
- › Mills Williams
- › John Young

### CLASS OF 2016

- › Thea Bournazian
- › Jonathan Dickey
- › Mary Beth Nethercutt
- › Richard Parker
- › Price Roe
- › Herma Williams
- › Delores Ziegler

# FROM THE MODERATOR OF THE BOARD OF DEACONS

In 2013, the Deacons continued strengthening the caring role and functions of the deacon team, ensuring that all those who have a need are ministered to quickly and compassionately. Throughout the year, Deacons continued pursuing the goals of building community, caring for people who are hurting, caring for each other, and mobilizing other church members to reach out to those in need.

## – 2013 HIGHLIGHTS –

- › Deacons continued to build “Care Needs Lists” for every region (VA, MD, DC) of NPC members and friends in need of care. At every meeting, Deacons reviewed these lists and assigned someone from the team to each person on the list.
- › To help identify care needs in the church, a “Meet Your Deacons” corner was created in Stone Hall. A board with pictures of all the deacons helped the congregation recognize and connect with Deacons.
- › Three regional parish gatherings were held in the fall, and three in the spring to build and strengthen community and help people get to know each other better.
- › Monthly Deacon meetings included presentations on building community, emotional intelligence, developing courage, and embracing strangers.
- › During the Christmas season the Deacons organized support for three charities: Stepping Stones (MD), Central Union Mission (DC), and the Fort Belvoir Hospital Red Cross (VA), gathering Christmas gifts of all kinds as identified by each of the charities—hugely successful!

*Virginia R. Beeson*

GINNY BEESON

*Moderator of the Deacons*

## THE BOARD OF DEACONS

### CLASS OF 2014

- › Laura Atchison
- › Kim Cox
- › Susan Denecke
- › Diane Hannum
- › Erik Larson
- › Mary Lou Lyon
- › Ann May
- › Bill Morton
- › Lucille Smiley
- › Miley Tucker-Frost
- › Ginny Wagner
- › Randy Wagner
- › May Yamate

### CLASS OF 2015

- › Ginny Beeson
- › Annette Burgart
- › Dennis Burgart
- › Nancy Chapman-Colb
- › Fred Drew
- › Natalie Lui Duncan
- › Mike Hammaker
- › Adele Jackson
- › Ann Kaguyutan
- › Ed Kindred
- › Joanna Manoranjan
- › Bryce Pippert
- › Aly Porter
- › Mary Romano
- › Margaret Slipek
- › David Trisler

### CLASS OF 2016

- › Nilanthi Beekhuysen
- › Kathy Byus
- › Carol Cadou
- › Jan Childress
- › Marie Claussen
- › Sue Fitzgerald
- › Colleen Flynn
- › Carolyn Gasarch
- › Veronica McKenna
- › Jane Peterson
- › Robert Peterson
- › Dottie Rayburn
- › Delores Slaugh
- › Dick Tingley
- › Guy Wessels



# WORSHIP REPORT

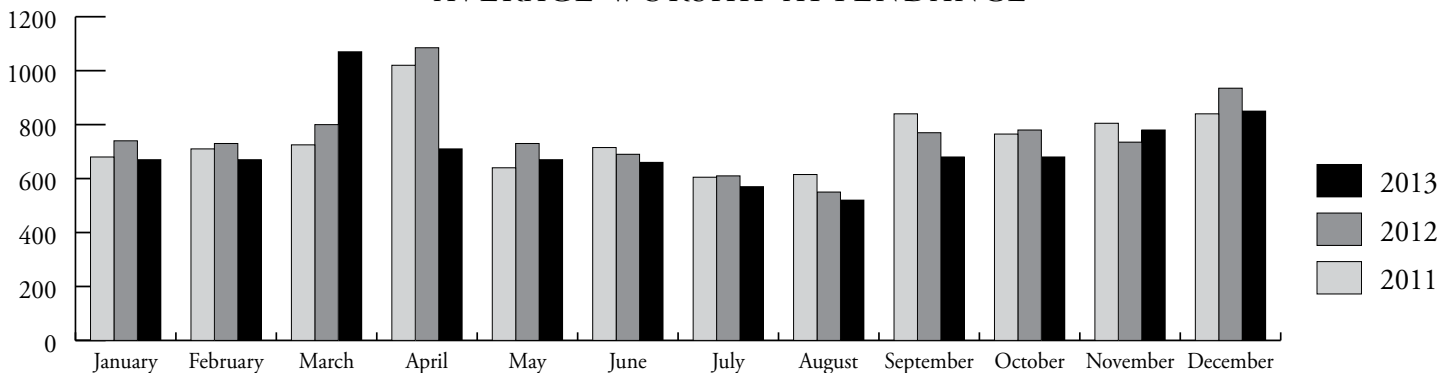


In 2013, Sunday worship services were held at 8:15 a.m. in the Chapel of the Presidents and at 9:15 and 11 a.m. in the Sanctuary, frequently including baptisms. Communion took place at least monthly and during Wednesday evening Vespers in Lent and Advent. These services, as well as weddings and memorial services, concerts, and special events were supported by our pastoral team and by Worship Council volunteers serving in five committees: Music, Sacraments, Flowers, Ushers and Hospitality.

## – 2013 HIGHLIGHTS –

- › More children are now attending the beginning of the 9:15 service, aiding in their spiritual growth and increasing family worship experiences.
- › “Doxology” and “Rejoice Greatly,” worship services on June 16 and December 15, enhanced with special music, drew large congregations.
- › The informal, festive, family atmosphere of the “Pray, Eat, Love” worship service on September 1, 2013, provided a model for an anticipated annual event.
- › Flower ministries initiated small floral displays for Sunday worshipers to take to home-bound congregants.
- › Youth and children’s groups participated more often in worship services.
- › The Grace Chimes Bell Choir returned to Sunday worship services.
- › The First Service worship team added more musicians.
- › One of the two young and talented musicians being mentored by Organist Bill Neil has already performed in Sunday worship services in the Sanctuary.

## – AVERAGE WORSHIP ATTENDANCE –



# CARE REPORT



The Care Council, established in 2012, continues to grow and flourish. Dr. Renwick has observed that “a caring congregation begins by simply noticing and acknowledging people...all people.” The Board, ministries, and programs that fall under the supervision of the Care Council work to see and respond to people in specific moments and periods of need. As a church, we strive to embrace the concept of Christ’s commandment to love and care for one another as He has loved us – whether NPC members, regular attenders, friends, neighbors, or newcomers. The goal of Care Council is that no one who enters our campus goes unnoticed, unacknowledged, or uncared for.

## – 2013 HIGHLIGHTS –

- › Rev. Evangeline Taylor, with the assistance of the Board of Deacons and all of our members, visited the sick and home bound, provided pastoral counseling, and oversaw the preparation of the Care and Joy list.
- › Over 40 Deacons, led by Moderator Ginny Beeson and Rev. Donna Marsh, provided support to the congregation and care for people in need. Over the past year the deacons have continued to reorganize and restructure in to regional groupings to best respond to the needs of the congregation.
- › 25 Stephen Ministers, led by Elder Glenn Schmitt, provided confidential, one-on-one emotional and spiritual support to members and friends of the congregation experiencing difficulty in their lives.
- › In Touch Ministry, led by Elder Al Duncker, provided support to our home-bound congregation through visitation, copies of sermons and bulletins, news of the church, and prayer.
- › Chapel Prayers were held each Sunday after the 9:15 and 11 a.m. services, offering people the opportunity to have one-on-one prayer with a pastor, an Elder or Deacon, and Stephen Ministers.
- › The Connections Ministry guided 52 visitors into becoming members, mentored the newly received members of the church, and assisted them in identifying ways in which they could become more involved in the life of the church.
- › The GriefShare program, led by Rev. Taylor, provided small group sessions to assist those experiencing the painful loss of a loved one.
- › The Job Seekers Group, led by Rev. Donna Marsh, provided spiritual support to those seeking employment.

# SERVE REPORT



Serve Ministries seeks to show the gracious and just character of God, the redeeming love of Christ, and the transforming power of the Holy Spirit in all the ways NPC serves in the world. Under Serve Council are the International Mission and Local/National Mission Committees. Together, they connect our congregation to ministries and people who build up God's kingdom, and create opportunities for engagement through service, learning, and prayer.

## – 2013 HIGHLIGHTS –

### **Provided opportunities for the congregation to serve in mission**

- › Church-wide service days including NPC Cares Day and projects at Pray, Eat, Love
- › Food donations; sandwich/fruit cup making for Martha's Table
- › Monthly Habitat for Humanity builds
- › Items collected for Unique Learning Center, Friendship Place, and Central Union Mission

### **Increased mission understanding, engagement, and communications at NPC**

- › NPC Heart to Serve mission weekend with speaker Tim Dearborn and ministry partners
- › Lenten focus on missions
- › Launched new quarterly newsletter *Love Serves* for the whole congregation
- › High impact hallway banners and 10 Pathway moments in worship
- › 3 *Lunch and Learn* events. Topics: Asia; Palestine; spiritual formation through mission
- › 14 opportunities for members to meet mission partners and international guests

### **Collaborated with other NPC ministries to integrate mission**

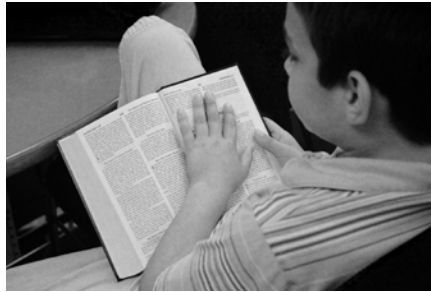
- › Biblical Justice series featuring noted experts on human trafficking, refugees, poverty, hunger and homelessness, and more
- › New coordination with Youth service projects and support of Youth mission trips
- › Mission education at Vacation Bible School
- › Partnership with National Presbyterian School on MLK Service Day and sandwich making
- › World Food Day activities with Children's Ministry

### **Shared financial resources with those in need**

- › Over \$258,000 to local and international ministries/organizations, more than 65% of which came from the Charles Proctor bequest/challenge grant for missions
- › \$14,500 for an apartment for homeless in Friendship Place's AimHire employment program
- › Over \$14,500 to PC(USA) One Great Hour of Sharing; \$5,685 for disaster relief
- › Reformatted Mission Gifts for Christmas market engaged 216 NPC donors, and raised \$45,500 for 33 ministries
- › \$176,679 for theological education overseas, made possible by the John and Dorothy Shaw bequest through the NPC Fund for Charitable Giving



# GROW REPORT



Grow Ministries nurtures children, youth and adults into a deeper relationship with Jesus Christ through a spectrum of program offerings, ranging from weekly classes and groups, to monthly fellowship gatherings, to annual events. Grow Ministries provides important resources for the life of the heart and mind through our Library and Bookstore, and with the research capabilities available through the Archives. Our significant program ministries are: Children's, Youth, Adult Nurture, Women's Ministries, and Men's Ministry Committees; Additional ministry initiatives include: University, Young Adults, Older Adults, Marriage Ministries, Leadership Development and Care of Seminarians.

## – 2013 HIGHLIGHTS –

- › **Children:** 75-to-100+ children attended Sunday School weekly. Adjusted Sunday School start time to encourage children to begin in worship with their parents. July Vacation Bible School saw 100+ children attend, facilitated by 30+ volunteers. Hired Amy Thompson in August as Assistant Director of Children's Ministry to oversee nursery ministry and other duties. Implemented Parent Milestones to parallel and reinforce Children's Milestones in Worship. Launched "Club 45" a special emphasis in 4th and 5th grade Sunday school designed to foster leadership and prepare for transition to the Youth Department. Inaugurated "The Circle," a monthly gathering for parents and their young children. Developed a new brochure that describes the overall journey children and parents can anticipate during their years of nurture through Children's Ministries.
- › **Youth:** Hired McLane Stone in June as permanent Director of Youth Ministries. Two successful mission trips saw 19 high school and 10 middle school youth serve Christ in Belize and Panther, WV, respectively. Over 150 people attended an end-of-summer luncheon to hear NPC youth report on their mission trip experiences. Nearly 40 youth served as counselors for our Children's ministry Vacation Bible School and participated in service projects around the city with various NPC partners. Approximately 100 youth, parents and siblings gathered for the fall kickoff barbecue, leading to increased attendance at Sunday evening Youth Group. Held high school and middle school off-site retreats in November and December, respectively. The 23-voice Youth Choir sang in worship, at Ingleside, at the Mission Gift Market, and at the Choirister's Guild Youth Choir Festival.
- › **Adult Nurture:** Introduced a successful four-week January term with five new classes, allowing exploration of timely topics and providing a break for our regular teachers. Summer Sunday School saw a shift in format and a 68% increase from the prior year (99% increase compared to 2011). Began the evolution of our declining Wednesday Night Alive program into an array of broader options at more flexible times to attract a wider participation, including evening book discussions, monthly luncheons and periodic evening forums. Two outstanding plenary speakers and a skilled moderator engaged over 150 participants in a stimulating and strategic conversation on *The Changing Terrain of the American Religious Landscape* at our second annual fall conference. NPC now has three systematic approaches to reading through the Bible available: the weekly bulletin two-year lectionary, an annual reading format, and a New Testament-only schedule.

# GROW REPORT (CONTINUED)

- › **Marriage Ministry:** A successful one-day Prepare for Marriage Workshop saw ten couples learn about the foundation for a healthy marriage and share intimately on topics vital to their future lives together. A small couples group studied *The Meaning of Marriage*, by Tim & Kathy Keller.
- › **Leadership Development:** Sponsored a second successful November Session retreat as well as three well-attended *Fellowship of Elders* meetings during the year.
- › **Library and Archives:** Continued to provide resources to nurture the life of our congregation. At any one point 475+ books were in circulation with parishioners, reflecting over 2,700 visits to the main and satellite library. Twenty-nine volunteers bound five sets of worship bulletins, organized some 8,000 photographs, expanded the electronic archival catalogue of member biographies and various other historic church artifacts. The library answered 150 research inquiries, added 400 books to the collection, and received 1,500 donated books. Also, a large screen Smart TV was given to the library, with capabilities to view live and internet broadcasts, and DVD/VHS video. The annual Friends of the Library Luncheon saw 65 people gather for fellowship and support in their common love of the printed word; 88% of the budget is raised from donations. NPC hosted the annual Metropolitan Washington Congregational Library Association conference.
- › **Care of Seminarians Committee:** Craig Meek was advanced to Candidacy by the National Capital Presbytery; he continued studies at Pittsburgh Theological Seminary. Elaine Loggi graduated from Pittsburgh Seminary and has taken a call with Heartland Presbytery as part of the denomination's "For Such a Time as This" program, which matches new graduates with small churches seeking pastors. She is also a member of the *Company of New Pastors* program.
- › **Older Adult Ministry:** We built on the great heritage of our SKIFF ministry (which formally ended in June) with a revitalized monthly luncheon designed for a wide range of adults, with a special emphasis on our older adult population. Beginning in September, many who were regular Wednesday evening attenders found it more convenient to come to the church earlier in the day for fellowship and learning. Our average fall attendance was 100, with additional folks joining to hear the Army Chorus sing Christmas songs and carols in December.
- › **University/Young Adult Ministry:** Some 30 NPC college students gathered for an energetic time of reconnecting during a "Home from College" lunch reception on the Sunday before Christmas. In addition, we sent care packages to member of our NPC family away at college during final exam week. Outreach to students on the American University campus has seen a modest response. This fall we split our Young Professionals into two more focused groups. "Across the Aisle" (ages 22-35) gathered weekly for fellowship, study and service in the fall with 25 new people and an average weekly attendance of 15. Mid-Career Fellowship (30s and 40s) has seen a few new people join us as well. Our average attendance doubled as a result of this change.
- › **Women's Ministry:** Women of National and friends gathered at brunch events in February and October and for an April retreat in Williamsburg. Business & Professional Women continued to meet for their monthly luncheon programs. In September, WomenConnect moved from Sunday mornings to a monthly evening Bible Study. Long-time programs—Women in the Word, Wednesday Women Bible Study and "Real Moms"—continued their regular weekly meetings.
- › **Men's Ministry:** 45 men participated in a rich, overnight retreat at the Bolger Center in Potomac, MD in October, the first in many years. Monthly breakfast meetings continued as the year ended with a renewed vision and a new leadership team.

# FACILITIES REPORT

As NPC approaches almost 50 years on its Nebraska Ave. site, special attention is required to refurbish and upgrade the infrastructure of pipes, pumps, boilers, generators, rest rooms, roofs, kitchens, and accommodations that make the campus accessible and inspiring to all people. In 2013, the Facilities Council and NPC staff devoted considerable time and resources to improving this infrastructure, repairing and improving the campus, and upgrading planning and budget tools to support sound stewardship in management.

## – 2013 HIGHLIGHTS –

- › In 2012, the Session authorized the submission to the DC Board of Zoning Adjustment, a proposal for an expansion of the current School building. In 2013, the Session approved the pre-construction work for the School's expansion, and design and management planning have proceeded.
- › Throughout 2013, the Facilities Council, the Legal Committee, the NPC staff, and outside counsel guided the Session in the continuing effort to resolve insurance claims associated with damage from the August 23, 2011 earthquake. Efforts to resolve these insurance claims continue.
- › In 2013, actual parking income was over \$100,000 below budgeted due to the non-renewal of a parking contract.
- › Much-needed renovations to Elson Parlor were completed in the summer of 2013. Improvements include a new audio-visual system, an updated heating and air-conditioning unit, and interior redesign and decoration.
- › Future focus for improvements include: the modernization of restrooms, better building accessibility, a new security system, upgrades to the backup electrical generators, and modernization of the work areas of the Flower ministry.

## 2013 FACILITIES COUNCIL

### LEADERS

- › Rudy deLeon
- › Fred Byus
- › J. Mills Williams

### MEMBERS & PARTICIPANTS

- › Chris Cadou
- › Gerri Hall
- › Daniel Huthwaite
- › Robin Keese
- › Jane Peterson

### SPECIAL THANKS

#### Staff members:

- › David Browne
- › Sarah Crumley
- › Rubelio Iteriano
- › David Renwick
- › Lewis Saylor
- › Jim Walker

#### Parlor renovation volunteers:

- › Trudy Simmons, Chair
- › Thea Bournazian
- › Judi Kless
- › Louise Pinckernell
- › Roma Samuel
- › Christa Schauer
- › Wayne Ziegler

# FINANCE REPORT

The Finance Council continued to build on the solid infrastructure of the Finance Office, concentrating in 2013 on improving the processes and procedures of the Finance Office as well as the investment policies of the Church. (Special thanks to Kathleen Murray, Finance Manager, who returned to school, and handed over the reins in December to Joe Abatemarco.) There was also a renewed focus on Stewardship in 2013, resulting in 424 pledges totalling \$1,991,704 for FY2014. This is an increase of 14.3% percent in the number of pledge cards, and an increase of \$263,880 in total pledges from FY2013.

For 2013, the total faith giving contributions to the church were up slightly over 2012; however, we fell below the 2013 faith giving budget by approximately \$170,000. Total income from all sources was \$4.9 million versus a budget of \$5.1 million. This includes approximately \$872,600 in income from the National Presbyterian School for shared costs and use of space. Fortunately, we were able to keep expenses lower than budget by approximately \$98,000, offsetting much of the faith giving shortfall. Overall, we ended 2013 with sufficient cash operating funds going into the new year.

The investments for the Church were at \$6.18 million at the end of 2013, a decrease of 2.5% from the December 31, 2012 balance of \$6.34 million. This reduction was due in part to the repayment of a short term loan, the use of \$300,000 to support daily operations, and the withdrawal of \$282,060 to perform maintenance to the facilities, including the renovation of the Elson Parlor.

The 57 Designated Funds supported ministries by collecting \$280,000 and distributing \$273,200 during 2013. The combined balance of Designated Funds was \$398,500 as of December 31, 2013. We continue to look for ways to ensure these Designated Funds are used to their fullest extent, and always for the purposes for which they were intended.

The Session approved a budget for 2014 totaling \$5,001,600. Monthly Finance reports are available for all members. Please contact the Finance Office for additional information.

## CELEBRATING LEGACY GIFTS

The Church was blessed by the faithfulness and generosity of several donors in 2013 whose special gifts and bequests will enhance the ministries of our congregation in years to come.

### LEFT TO THE CHURCH

- › Bequest of B. L. Gilbert: \$17,500
- › Bequest of Edna Mae Fordyce: \$10,000
- › Bequest of Mary C. Smith: \$20,700
- › Bequest of Ethel R. Tingley: \$175,000
- › Anonymous Gift: \$100,000
- › Distribution from the Souers Charitable Trust: \$35,000



# FINANCE REPORT - INVESTMENTS, INCOME & EXPENSES

## INVESTMENTS

DECEMBER 31, 2013

DECEMBER 31, 2013

Elder Investment Fund	\$634,675	Needy Women Fund	\$22,627
Memorial/MDC	232,297	Hopkins Organ Fund	99,972
Miriam P Leslie Fund	183,186	Pastor Denominational Activities	5,154
Parsonage Loan Fund	366,443	Property Management	1,488,107
Marjorie M. Freund Fund	1,025,639	Scholarship Fund	83,546
Braithwait Fund	209,149	Third Century	218,818
Cannon Charitable Trust	420,592	Trustee Mission Fund	213,651
Children's Religious Education Fund	221,399	Women's Ministry Fund	30,423
Operations Support Fund	580,185	Other Fund	47,772
Music Library Fund	11,496	Anonymous Gift 2010	85,777
Ending Market Value (12/31/13)		\$6,180,908	
Ending Market Value (12/31/12)		\$6,037,472	
Increase/(Decrease) in Value		\$143,436	

## INCOME

FY 2012  
ACTUAL

FY 2013  
BUDGET

FY 2013  
ACTUAL

FY 2013  
% OF BUDGET

Faith Giving	2,566,221	2,741,838	2,571,988	93.8%
Facilities Use	1,638,017	1,581,699	1,396,722	88.3%
Other Income	27,078	27,200	16,973	62.4%
Special Income	416,925	207,000	391,618	189.2%
Endowment/Transfers	522,917	560,138	552,919	98.7%
	\$5,171,158	\$5,117,875	\$4,930,220	96.3%

## EXPENSES (BY COUNCIL)

WORSHIP	79,693	70,700	81,594	115.4%
GROW	64,032	93,890	83,328	88.8%
CARE	24,695	42,500	38,739	91.2%
SERVE	226,994	292,100	287,094	98.3%
Personnel	2,600,493	2,862,721	2,778,191	97.0%
Finance	130,127	19,550	19,605	100.3%
Facilities	1,639,333	1,653,818	1,654,461	100.0%
Governance	82,747	89,096	84,135	94.4%
Other	(30,515)	-	(385)	
	\$4,817,599	\$5,124,375	\$5,026,762	98.1%

# FUND REPORT

The NPC Fund for Charitable Giving, Inc., is a section 501(c)(3) charitable organization and an affiliate of National Presbyterian Church. It is governed by a Board of Directors with experience in investments, law, and business, chosen by the Session and the congregation. The Fund assists members and friends of the church in planned giving transactions.

## – 2013 HIGHLIGHTS –

- › **Financial Results:** The Fund holds assets in a variety of planned giving arrangements, including charitable remainder trusts, donor advised funds, endowment funds managed for the Church, and assets backing charitable gift annuities. The assets are managed in a collective investment account by an investment committee with outside professional advice under direction to maintain a balanced portfolio. In 2013, the value of a unit improved by 17%. The value of assets under management of the Fund at year end 2013 was approximately \$3.3 million, as compared to approximately \$2.4 million at the end of 2012, primarily as the result of the receipt of additional funds from the Charles Proctor Trust and changes in market value. Additionally, there were disbursements of funds from the John and Dorothy Shaw Donor Advised Account.
- › **Benefits to NPC:** During 2013, the additional funds received from the Charles Proctor Trust, together with the John and Dorothy Shaw Donor Advised Fund, have empowered our Church to substantially expand its support of foreign and domestic mission activities. The remainder of the Charles Proctor Trust monies is expected to be received in 2014.
- › **Donor Advised Funds:** The Fund continues to serve several Donor-Advised Accounts, including in particular the John and Dorothy Shaw account. The Fund is able to make grants from such accounts as recommended by the Donor or, in the case of John and Dorothy Shaw, the NPC Outreach Committee.
- › **Life Income Gifts:** The Fund serves several Charitable Remainder Trusts and Charitable Gift Annuities that are designed to provide a combination of tax benefits, periodic distributions to the Donor (and/or Spouse or other designee) and remainder gifts to NPC and/or other public charities as stipulated by the Donor.

## 2013 FUND OFFICERS

- › David Wallace, Chair
- › Chuck Petty, President
- › Rick Hawthorne, Secretary
- › John Harman, Treasurer

# GOVERNANCE REPORT

The Governance Council carries out Session's responsibilities to train and examine elders and deacons; assists in Session's duty to elect commissioners to presbytery; helps lead the congregation to discover God's work in the world and to plan for change, renewal and reformation; and maintains relationships on governance-related policies with NPC Councils and Committees. Governance submits names to Session for representatives to the Fund for Charitable Giving Board of Directors, and Voting Trustees of the National Presbyterian School (NPS) Board of Trustees, and provides liaison and oversight for NPS and the Fund for Charitable Giving. The Council consists of four committees: Denominational Issues; Audit; Legal; and, Strategic Directions.

## – 2013 HIGHLIGHTS –

- › Governance solicited names from congregants, Session, pastors, and staff from which a slate of 9 individual nominees were presented and recommended to Session to serve on the Strategic Planning Team.
- › Created guidelines and process for nomination and appointment of voting trustees to the National Presbyterian School (NPS), to be reviewed again in 2014.
- › Governance Council recommended, and Session approved, Elder John Young to serve up to two years of remaining unexpired term of Elder John Reich (2016); and, Elder Jim Holt to fill new term February 2014–January 2017 for the Fund for Charitable Giving.
- › Represented NPC at all 2013 National Capital Presbytery meetings.
- › Session ratified an addition to the NPC Session Policy Manual (SPM) in Section 3. 2. b. 8 as follows: “Contribute to Session’s culture of grace, mutual respect, openness and excellence and **in so doing follow—as an interpersonal code of conduct guideline based on Scriptural references**—the PC/USA’s document entitled *Standards of Ethical Conduct, Life Together in the Community of Faith*, as approved by the 210 General Assembly (1998.)”

## 2013 GOVERNANCE COUNCIL

### MEMBERS

- › Sam Alward
- › Jim Holt
- › David Mack
- › Emmy Lewis, Chair
- › Ron Martinson
- › George Nethercutt
- › Roma Samuel, Vice Chair
- › Terry Schlossberg
- › J. Mills Williams
- › David Renwick, Ex-Officio

### 2013 NATIONAL CAPITAL PRESBYTERY COMMISSIONERS

- › Faith Burton
- › Fred Byus
- › Eleanor Heginbotham
- › Alease Johnson
- › David Mack
- › Linda McCaw
- › Terry Schlossberg
- › Ann White

# MEMBERSHIP REPORT

## MEMBERS AS OF DECEMBER 31

2013	1,506
2012	1,872
2011	1,870
2010	1,869

## IN MEMORIAM

Members of our congregation who died during 2013:

- › Timothy R. Johnson, May 21, 2011\*
- › Linda H. Muncy, January 31, 2012\*
- › Helen Carr Jessup, November 9, 2012\*
- › Carl F. Emde, January 8, 2013
- › Marilyn C. Pownall, January 10, 2013
- › Ethel R. Tingley, January 11, 2013
- › Duncan A. D. Mackay, January 15, 2013
- › Dorothy McCabe, January 21, 2013
- › LeRoy W. Dymont Jr., March 8, 2013
- › Anna E. Dougherty, April 25, 2013
- › Thomas R. Bartman, May 13, 2013
- › Jane A. Moss, May 16, 2013
- › Dorothy K. Blesse, May 25, 2013
- › Bruce Joe Conard, May 31, 2013
- › Franz Werner Krebs, June 6, 2013
- › Mary Juhn Kim, June 14, 2013
- › Marilyn S. Pickrell, June 17, 2013
- › Louise E. McKenzie, July 15, 2013
- › Michael Jan Johnson, July 28, 2013
- › Valerie W. Tompkins, August 14, 2013
- › Eleanor M. Keyser, August 22, 2013
- › Arthur Schintzel, September 6, 2013
- › Mildred Carroll, September 16, 2013
- › Frances Lee Thornton, September 15, 2013
- › David B. Weaver, October 6, 2013
- › Jean Hutto Hall, October 28, 2013
- › Gladys K. Totah, November 17, 2013
- › Henry Yu-hang Wong, November 18, 2013
- › David W. Wilson, November 27, 2013
- › Jean S. Showalter, December 2, 2013
- › Albert John Oskison, December 25, 2013
- › Walter Cassatt McCabe, December 28, 2013

*\*NPC was notified of the death in 2013*





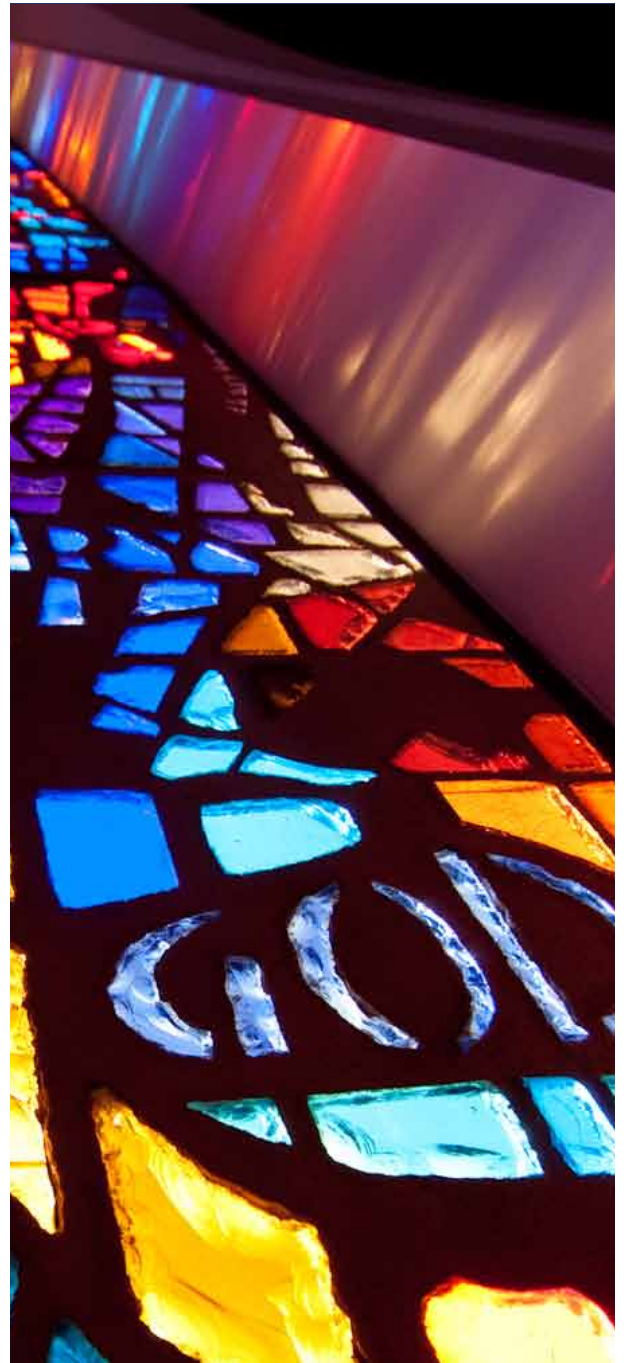


“

*For as in one body we have many members, and not all the members have the same function, so we, who are many, are one body in Christ, and individually we are members one of another. We have gifts that differ according to the grace given to us: prophecy, in proportion to faith; ministry, in ministering; the teacher, in teaching; the exhorter, in exhortation; the giver, in generosity; the leader, in diligence; the compassionate, in cheerfulness.*

ROMANS 12:4–7

”





4101 NEBRASKA AVE. NW  
WASHINGTON DC 20016  
202.537.0800  
[www.nationalpres.org](http://www.nationalpres.org)