

2014

ANNUAL REPORT





From the Senior Pastor	3
From the Clerk of Session	4
Worshipping Together	5
Demonstrating God's Love Together	7
Proclaiming and Embodying the Gospel Together.....	8
Growing Spiritually Together.....	10
Sustaining NPC Together.....	12
Thank You.....	14

*Leading people to become
faithful followers of Jesus Christ,
together in God's world.*



FROM THE SENIOR PASTOR

Dear Friends at National,

Turn to the front page of this 2014 Annual Report and you'll see a picture of the sanctuary stained glass windows. They are beautiful and inspiring.

Turn to the back few pages of this annual report and you'll see lists of people's names. Not so beautiful or inspiring, at least at first glance! To me, however, these names reflect something truly beautiful and inspiring too: many hours committed to serving Jesus Christ in and through the church, alongside many other people – too many to mention by name – also involved in building our community and bearing witness to Christ together.



I'm especially grateful to our Elders and Deacons with whom I work most closely, and for all who serve with them. But this year, I'm more than especially grateful for the 2014 Strategic Planning Team:

Ginny Beeson (Chair), Fred Byus (Co-Chair), Brian Julius, Scott Nycum, Nancy Peterson, Bryce Pippert, Tisha Schestopol, Terry Schlossberg, and Janice Sessing. Their persistent and faithful work, culminating in the 2014 Strategic Plan, after meeting every two weeks for over a year, has and will continue to transform our life together.

Developing a plan is not an overnight matter. Nor is implementing a plan. A plan is really a call to hold on to what is good from the past (and there is much of that) and then to slowly shift direction, (like shifting the direction of an ocean liner), followed by the determination to maintain that shift over the long haul (for at least 3-5 years) until the ethos, programs, and staffing of a congregation align more faithfully with Christ's call and the congregation's needs.

You'll see that the layout of this report reflects the 2014 Plan. Let me challenge you to be part of this plan, and to seek out God's call to "shift direction" in your own life. May 2015 be a year in which you can say, "I became a more *faithful follower of Jesus Christ* together with others at National, and a leader, determined to *lead people to become Faithful Followers of Jesus Christ Together in God's World.*"

So glad to be your pastor,

A handwritten signature in black ink that reads "David Renwick". The signature is written in a cursive, flowing style.

DR. DAVID RENWICK
Senior Pastor

FROM THE CLERK OF SESSION

Throughout 2014, the Session, through its Strategic Planning Team, was in conversation with the congregation about who we are as a church and who we believe God is calling us to be. The Team held over 50 meetings with church leadership, staff, and congregational focus groups; conducted a congregational survey with nearly 500 respondents; and received and considered dozens of written suggestions through comment boxes, letters, and email. The Team gained deep insight into our strengths and our opportunities. They visited other churches and studied literature in the areas of church strategy and organization. The Team sought God's direction in Scripture, in conversation, and in prayer with you and with each other. Many church members prayed for God's will to be made known through this planning effort and for God's passion for the future of NPC to shine through the plan. The Session believes that God has answered and is answering these prayers.

On September 22, 2014, the Session approved the new strategic plan, which was presented to the congregation on October 26, 2014. We now have the opportunity and blessing to live out this calling for our congregation to "lead others to become faithful followers of Jesus Christ, together in God's world" by worshipping together, growing spiritually together, proclaiming and embodying the gospel together, demonstrating God's love together, and sustaining NPC together.

The Session is grateful not only for the devotion of the members of the Strategic Planning Team, but also for the participation of nearly the entire congregation. Together we, as a congregation, are committed to knowing and serving the Savior, who is the cornerstone of our faith and the head of our church. Supporting us is a rich 250-year history of this church's faithfulness and a heritage of biblical teaching and worship. Awaiting us is a bright future if we trust God, embrace His call, and act.



Clerk of Session

npcclerk@gmail.com



The strategic plan is really a means to transform the way that we are as Christians – how we interact with our fellow congregants, and how we are then the vehicle through which the light of Jesus Christ shines to our communities and to the entire world.”

WORSHIPPING TOGETHER



© Karen Elliott Greisdorf Photography

8:15 A.M.

Contemporary worship in the chapel
70 AVG. WORSHIPPERS

9:15 A.M.

Traditional worship in the sanctuary
238 AVG. WORSHIPPERS

11 A.M.

Traditional worship in the sanctuary
417 AVG. WORSHIPPERS

+ ONLINE WORSHIP www.nationalpres.org/live 125 AVG. WORSHIPPERS and growing!



COMMUNION

Communion was served on the first Sunday of the month and Wednesday evenings during Vespers. 32 people received communion at home during the year.



MUSIC

Joyful music was shared weekly by the Chancel Choir and the Contemporary Praise Team augmented with special performances by the Festival Choir, Youth Choir, Grace Notes and Joyful Noisemaker's children's choirs, and Grace Chimes Handbell Choir. Special music-enhanced services took place throughout the year such as "Doxology" and "Let it Rise" in June, "Pray Eat Love" in September, and "Lessons and Carols" in December.

Listen to the
Chancel Choir
by scanning the
QR code with your
smart phone.



BAPTISMS

17 children and three adults joined the National Presbyterian Church community through baptism in 2014.



FLOWERS

Beautiful floral arrangements graced the pulpit, Court of Flags, Chapel, and church entrances every Sunday and on special occasions.



EASTER

April 20

2,139 WORSHIPPERS



PRAY EAT LOVE

September 7

641 WORSHIPPERS

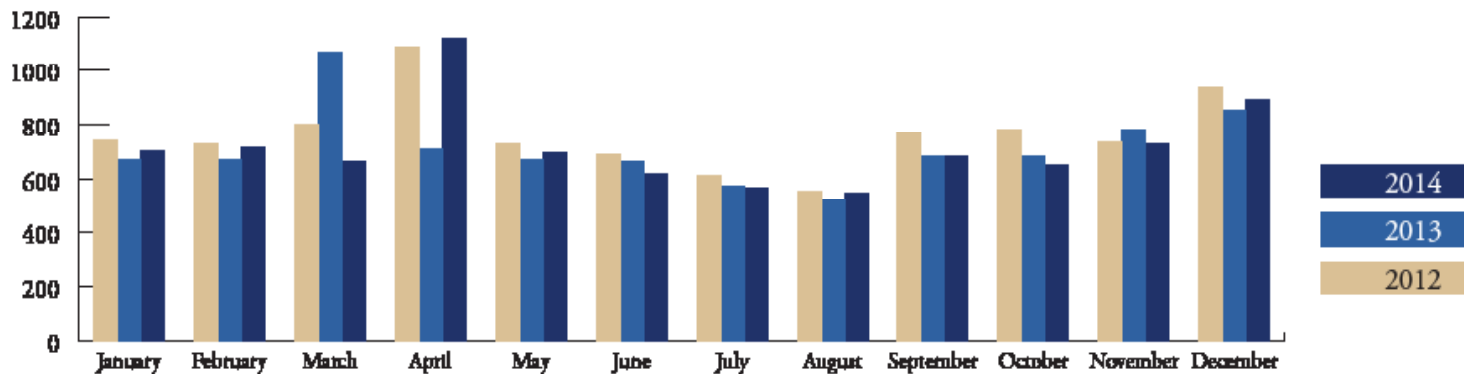


CHRISTMAS EVE

December 24

1,063 WORSHIPPERS

AVERAGE WORSHIP ATTENDANCE



725 Average number of worshippers

+125 Average number of online worshippers

Invite a friend to worship at National! 62% of those signing the Friendship Register for the first time were invited by a friend, family member, neighbor, or co-worker.

MEMBERSHIP



1,541 Members as of December 31, 2014

73 New members joined in 2014

IN MEMORIAM

We prayerfully remember the members of our congregation who passed away in 2014:

- › Marietta B. Stevenson – January 4, 2014
- › Charles “Duke” R. Botsford – February 7, 2014
- › Doris J. Botsford – February 23, 2014
- › Althea L. Wilbur – April 15, 2014
- › George K. Graeber – April 26, 2014
- › Ronald S. Lee – May 3, 2014
- › Maribelle Moore – June 2, 2014
- › Margaret S. Custis – June 6, 2014
- › James “Jay” M. Merchant – June 25, 2014
- › Shirley R. Bynoe – July 7, 2014
- › Harley D. Wilbur – July 10, 2014
- › Barbara C. Priddy – August 8, 2014
- › Mary Alice Keller – August 28, 2014
- › George H. Bowman – September 17, 2014
- › Alphonse “Al” Strachocki – September 24, 2014
- › Rufus S. Hill – September 29, 2014

DEMONSTRATING GOD'S LOVE TOGETHER



DEACONS

40 Deacons cared for members and friends of NPC in Maryland, Virginia, and DC, through prayer, meals, visits, regional gatherings, and friendship.



STEPHEN MINISTERS

25 Stephen Ministers provided confidential, one-on-one emotional and spiritual support to members and friends of the congregation experiencing difficulty in their lives.



AT-HOME MINISTRY

At-Home Ministry volunteers visited home bound members once a month to share good cheer and the Good News through a short devotional and prayer time.



CHAPEL PRAYERS

Chapel Prayers were held each Sunday after the 9:15 and 11 a.m. services, offering people the opportunity to have one-on-one prayer with a pastor, an Elder or Deacon, or Stephen Ministers.



GRIEFSHARE

Those experiencing the loss of a loved one gathered for a 13-week video seminar and group discussion. Rev. Evangeline Taylor led three GriefShare courses in 2014.



Until we know that no member of our congregation would go unmissed if they were in a crisis; until we know that everyone within our fellowship has somebody who would notice them, our work as the body of Christ is far from complete. This is to be the community that Jesus came to establish, in which we are known and are noticed, and we notice and know."

DAVID RENWICK



PRAYER ROCKS

March 23–April 6



WHOLENESS & HEALING SERVICES

March 30, June 8,
September 14, December 14

Pray for your church family using the "Care and Joy" blue sheet found weekly on the information table outside of the Sanctuary.

PROCLAIMING AND EMBODYING THE GOSPEL TOGETHER



NPC high school students serve on a summer mission trip in Belize.



GREAT DAY OF SERVICE

May 11

200 NPC volunteers

185 Neighborhood participants

20,088 Meals packed for famine zones

100+ Bags of women's professional clothes collected

50 Lunches made for homeless men in DC

1 Truckload of household goods to Salvation Army



PRAY EAT LOVE

September 7

5,000 Pounds of produce bagged for local food banks

40 Boxes of books collected for children

\$900 Donated to mission partners



MIDDLE SCHOOL MISSION TRIP

Panther, West Virginia



FEEDING THE HUNGRY IN DC

Martha's Table Collections in 2014

7,500 Sandwiches

513 Cans of tuna

495 Boxes of cereal

419 Bags of rice

1,667 Other nonperishable food items



HABITAT FOR HUMANITY

Monthly NPC-sponsored builds



HIGH SCHOOL MISSION TRIP

Caledonia, Belize

"Several years ago I felt God's call to work in Senegal at a school for deaf children. Since becoming an NPC missionary, our church has supported me with prayer, friendship and financial support that enables me to purchase much-needed classroom materials to assist teachers in providing an effective educational program."

ANGELA BEDNARCZYK



\$255,000

Distributed to NPC mission partners in 2014

\$59,291

↑ 33% from 2013

Raised to support 33 charities in DC and throughout the world through Mission Gifts for Christmas

\$16,300

Raised for the PC(USA) One Great Hour of Sharing Offering

MISSION PARTNERS

LOCAL PARTNERS

- › Central Union Mission
- › DC Habitat (Habitat for Humanity)
- › Friendship Place
- › Martha's Table
- › Mid-Atlantic Gleaning Network (MAGNET)
- › Unique Learning Center
- › Young Life DC

INTERNATIONAL PARTNERS

MISSIONARIES

- › Angela Bednarczyk (*Senegal*)
École Renaissance des Sourds
- › Fraser and Liz Bennett (*Dallas*)
Wycliffe Bible Translators
- › John Bernbaum (*Moscow*) Russian-American Institute

- › Dustin and Sherri Ellington (*Zambia*)
Justo Mwale University
- › Mary Lou Lyon
CrossCare International
- › Peggy McCracken (*DC*)
Christian Embassy
- › Keith Patman (*central Africa*)
Wycliffe Bible Translators
- › Steve and Janice Quakenbush (*Dallas, Philippines*)
Wycliffe Bible Translators
- › Stuart and Cathie Showalter (*Burkina Faso*)
Wycliffe Bible Translators
- › John Wagner (*NYC*)
Young Life

PARTNER MINISTRIES

- › Bethlehem Bible College (*Bethlehem*)
- › Chisinau College of Theology (*Moldova*)
- › Evangelical Theological Seminary (*Croatia*)
- › Foundation for Peace (*Haiti, Dominican Republic, and Kenya*)
- › Holy Land Christian Ecumenical Foundation (*Bethlehem*)
- › McGilvary College of Divinity (*Thailand*)
- › Moldova Marriage Ministry (*Moldova*)
- › New Hope International (*Eastern Europe*)
- › Our Lady Queen of Peace (*Palestine*)
- › Unsung Heroes (*South Africa*)



Martha's Table



Moldova Marriage Ministry



Bethlehem Bible College



Unique Learning Center



McGilvary College of Divinity



École Renaissance des Sourds



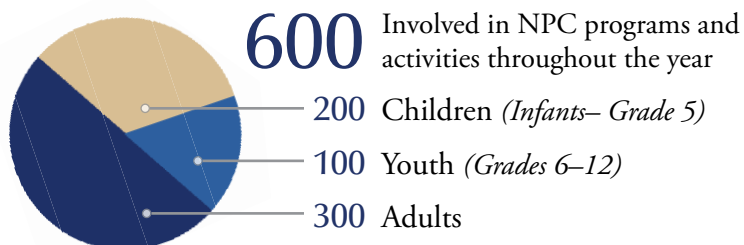
Wycliffe Bible Translators



HOLY LAND TRIP

June 22 – July 2

GROWING SPIRITUALLY TOGETHER



Small Groups

Find your place in a group that meets regularly for fellowship and Bible study. Groups for all ages and stages are meeting on Sundays after worship and throughout the week. Check the website: www.nationalpres.org under “Adults,” or the back page of the bulletin.



CHILDREN

An average of 80 to 100 children came to our nursery and Sunday school classes each week, as our congregation actively lived out the promises we make when our children are baptized—to teach them and nurture their faith. Kids learned about the love of Jesus and the Word of God. Each grade participated in an age-appropriate “Milestone” to teach them about our worship and liturgy. These were mirrored by Parent Milestones that encouraged and equipped parents to bring faith home. Our newer ministries, for families (The Circle), and preteens (Club 45), have continued to take shape and grow through monthly gatherings that foster community and ease the transitions through each stage of family life.



VACATION BIBLE SCHOOL

July 7–11



YOUTH

55 to 65 youth (from 6th to 12th grade) attended Sunday school each week; 25 to 30 attended weekly Sunday evening youth group gatherings. Our youth grew in their relationships with God and one another through retreats, mission trips, and special service projects and events. Over 40 youth served as volunteer leaders in our Children’s Ministry’s week-long Vacation Bible School; 22 high schoolers and 8 middle schoolers attended summer mission trips; and 50 youth and their families participated in a Family Service Day preparing meals for NPC mission partner McKenna’s Wagon. 11 ninth graders joined NPC as adult members as we saw the promises made at baptism come to fruition in Confirmation on Youth Sunday, May 11.



MIDDLE SCHOOL RETREAT

November 7–9



HIGH SCHOOL RETREAT

December 5–7



YOUTH SUNDAY

May 11



ADULTS

110 to 130 adults participated in weekly Sunday School classes during the spring, fall, and January terms (a higher number joined us on Summer Sundays for a plenary presentation). Groups met regularly on every day of the week to study the Bible, discuss Christian books, share with one another, pray together, hear special guest speakers, and grow in Christian community.

Several special events took place during the year including our annual fall conference, “Redeeming the Gift of Power” with Andy Crouch of *Christianity Today*, as well as retreats for women (spring) and men (fall). We were blessed with interesting and inspiring speakers at the monthly Adult Fellowship luncheons, Business and Professional Women’s Guild luncheons, and Men’s breakfasts.



FALL CONFERENCE

October 18



MEN’S RETREAT

September 19 & 20



WOMEN’S RETREAT

April 4–6



COLLEGE STUDENTS & YOUNG ADULTS

A typical Sunday saw 10 to 15 young adults (ages 22-35) gathered after worship for lunch, fellowship, sermon discussion and Bible study. In fall 2014 we launched a ministry to international students at nearby American University (AU); NPC volunteers shared God’s love with these students far from home by offering friendship in the name of Christ through hospitality and shared activities. We sent 100 care packages to our college students throughout the country during finals week. For students in the DC area, NPC offered monthly home-cooked meals after worship; we began a bi-monthly on-campus Bible study on the AU campus.



LIBRARY & ARCHIVES

50 patrons/week utilizing 2 library locations
(Culbertson and Satellite)

22 Faithful volunteers

2,400 books and other resources (e.g., DVDs)
checked out over the course of a year

Nearly 300 new books and resources added this year

Read Scripture daily
using the guides available in
brochures in the literature
racks or on the back page of
the bulletin.



Satellite Library
Located just outside
of Stone Hall across
from the bookstore



Culbertson Library
Located on the
second floor of the
Administration
Building

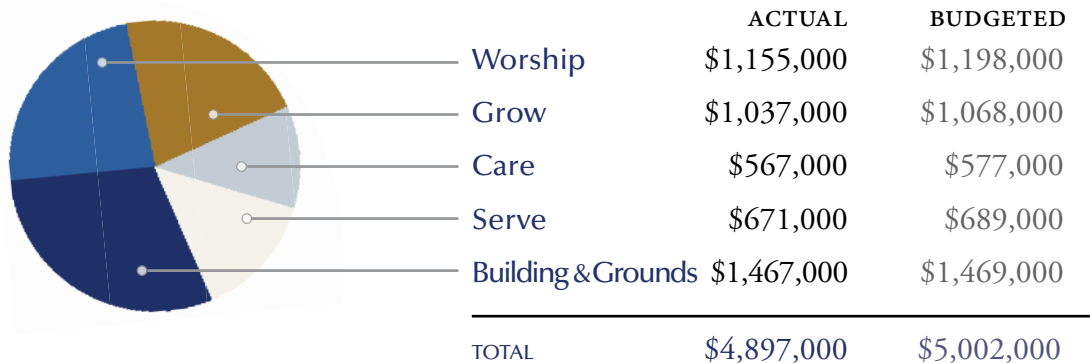
BOOKSTORE

Located across from the Satellite Library, the bookstore encourages Christian growth and discipleship through the sale of books and other resources. We offer discounted prices on titles for book discussion classes and adult Sunday School, at special event book tables (such as the annual fall conference) as well as for visiting preachers and guest Sunday School teachers.

SUSTAINING NPC TOGETHER

2014 OPERATING EXPENDITURES (rounded)

Personnel, administration, and governance expenditures are included in each ministry area.



- › 2014 actual expenditures were 2% under budget and 3% under 2013 actual expenses.
- › Personnel compensation and benefits were approximately \$2,661,000.
- › \$255,000 of “Serve” expenditures was used to directly support missions. Note that mission expenditures need to increase significantly to meet the 5-year Strategic Plan goal of 20% of faith giving.

CAPITAL IMPROVEMENTS

In addition to the expenses listed above, \$190,000 of facilities capital improvements were completed.

- › With funds from a special gift, restrooms in the narthex and outside Stone Hall were renovated.
- › Sewer line from the Multi-purpose building was repaired with funds from “Close the Gap” campaign.



RESTROOM RENOVATION
Summer 2014

INVESTMENTS

NPC utilized \$300,000 from investments to support operations. \$220,000 was withdrawn from the investments for engineering studies and legal fees in connection with the 2011 earthquake damage claim. The investment portfolio began 2014 with a value of \$6,095,000 and ended with \$5,546,000.

AFFILIATED ORGANIZATIONS

The National Presbyterian School

The National Presbyterian School (NPS) offers quality faith-focused educations for boys and girls from age 3 to Grade 6. In 2014, NPS compensated NPC \$310,000 for space usage and reimbursed \$478,784 for shared utilities costs. NPS completed a \$5 million expansion and renovation in the summer of 2014 adding new classrooms, a renovated library, and multipurpose spaces used by both the school and the church.

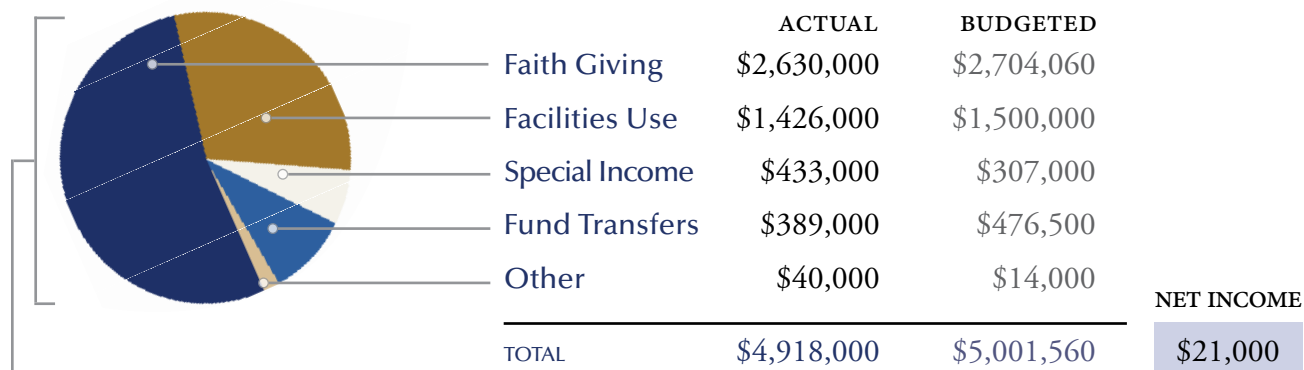


**NATIONAL PRESBYTERIAN
SCHOOL EXPANSION**
April–October 2014

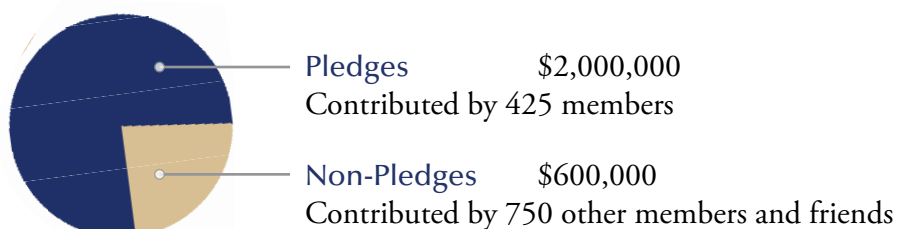
The Fund for Charitable Giving

The Fund for Charitable Giving is a 501(c)(3) charitable organization which provides a variety of planning and giving arrangements to assist individuals with their charitable giving. Funds from the Proctor Trust and John Shaw Fund supported NPC’s mission activities in 2014.

2014 INCOME *(rounded)*



FAITH GIVING



CLOSE THE GAP

The generosity of the congregation raised \$101,000 for a special “Close the Gap” campaign in June 2014. The funds were used for the sewer line repair, purchase of outdoor equipment, and to offset the cost of winter related expenses.

LEGACY GIFTS

In 2014, NPC was blessed by bequests from the following donors:

- › Ione Freeman
- › Mary C. Smith
- › John F. Lundquist
- › Margaret S. Custis
- › Frances Lee Thornton

Your gifts help to support God’s work through the mission and ministry of his local church. The NPC Finance Office (202.537.7495) can assist you with your giving, whether it is online at www.nationalpres.org/giving, through cash or checks, or the gift of assets including stock.

The Fund for Charitable Giving (202.537.7485) can assist you with various kinds of tax-advantaged methods of charitable contributions.

Thank you to all contributors for your generous support!

Thank You!

National was blessed with many dedicated leaders and volunteers in 2014, including the following:

PASTORS

Dr. David Renwick, Senior Pastor
Dr. Quinn Fox, Associate Pastor for Grow
Rev. Evangline Taylor, Associate Pastor for Care
Rev. Donna Marsh, Associate Pastor for Serve
Rev. Don Wilson, Parish Associate Rev. Nancy Fox, Parish Associate

STAFF

- › Joe Abatemarco (Finance)
- › J. Theodore (Jim) Anderson (Library & Archives)
- › Jessica Beaugez (Communications)
- › Shirley Best (Reception)
- › Dave Browne (Facilities Asst.)
- › Robin Clement (Asst. for Membership)
- › Betty Conn (Asst. to Senior Pastor)
- › Sarah Crumley (AA for Facilities)
- › Vicki Daniels (Finance Clerk)
- › Barbara Dear (AA for Care)
- › Michael Denham (Music)
- › Jay Gordon (IT)
- › Hilda Gore (Contemporary Service)
- › Carolann Haley (Asst. to Music)
- › Rubelio Interiano (Asst. for Facilities)
- › Bill McNett (AV & Operations)
- › Jill Meek (Children)
- › Janet Meyers (Bookstore)
- › William Neil (Organist)
- › Holly Novak (AA for Grow)
- › Kemet Rakiatu (Admin. for Membership)
- › Fernando Sabio (IT)
- › Leslie Saum (Connections)
- › Lewis Saylor (CAO)
- › Sally Steele (Serve - Local)
- › McLane Stone (Youth)
- › Charley Stone (Youth Associate)
- › Sally Swanson (Serve - International)
- › Amy Thompson (Asst. for Children)
- › Jim Walker (Facilities)
- › Katharine Wystrach (Personnel)

SESSION

- › John Gregg (Clerk)
- › Mills Williams (Assist. Clerk)

CLASS OF 2014

- › Fred Byus
- › John Forlines
- › Sally Kaplan
- › Sue Lockwood
- › Roma Samuel
- › Glenn Schmitt
- › David Schottke

CLASS OF 2015

- › Rudy deLeon
- › Margaret Gardner
- › Ellen Lawler
- › Emmy Lewis
- › David Mack
- › Mills Williams
- › John Young

CLASS OF 2016

- › Thea Bournazian
- › Jonathan Dickey
- › Mary Beth Nethercutt
- › Price Roe
- › Herma Williams
- › Delores Ziegler

CLASS OF 2017

- › Beth Bartholomew
- › John Bernbaum
- › Fred Byus
- › Rich Davies
- › Susan Lockwood
- › Nancy Piho
- › David Schottke

DEACONS

- › Dennis Burgart (Moderator)

CLASS OF 2014

- › Laura Atchison
- › Kim Cox
- › Susan Denecke
- › Diane Hannum
- › Erik Larson
- › Mary Lou Lyon
- › Ann May
- › Bill Morton
- › Lucille Smiley
- › Miley Tucker-Frost
- › May Yamate

CLASS OF 2015

- › Ginny Beeson
- › Annette Burgart
- › Dennis Burgart
- › Nancy Chapman-Colb
- › Fred Drew
- › Natalie Lui Duncan
- › Mike Hammaker
- › Adele Jackson
- › Ann Kaguyutan

- › Ed Kindred
- › Joanna Manoranjan Chai
- › Bryce Pippert
- › Aly Porter
- › Mary Romano
- › Margaret Sipek
- › David Trisler

CLASS OF 2016

- › Nilanthi Beekhuysen
- › Kathy Byus
- › Carol Cadou
- › Jan Childress
- › Marie Claussen
- › Sue Fitzgerald
- › Colleen Flynn
- › Carolyn Gasarch
- › Veronica McKenna
- › Jane Peterson
- › Robert Peterson
- › Dottie Rayburn
- › Delores Slaugh
- › Dick Tingley
- › Guy Wessels

CLASS OF 2017

- › Laura Atchison
- › Eileen Doty
- › Marianne Gray
- › Gerri Hall
- › Mary Ellen McKenna
- › Ann May
- › William Morton
- › David Nickels
- › Mary Romano
- › Lucille Smiley

WORSHIP COUNCIL

- › Jonathan Dickey (Chair)
- › Mary Beth Nethercutt (Vice Chair)

SACRAMENTS COMMITTEE

- › Linda Botsford (Chair)

MUSIC COMMITTEE

- › Dianne Tingley (Chair)

USHERS COMMITTEE

- › Walter Hampton (Chair)

HOSPITALITY COMMITTEE

- › Betty Hawthorne (Chair)

FLOWER COMMITTEE

- › Nora Szeto (Co-Chair)
- › Beverly Tam (Co-Chair)

CONTEMPORARY SERVICE COMMITTEE

- › Elizabeth Elliott (Chair)

GROW COUNCIL

- › Ellen Lawler (Chair)
- › Nancy Piho (Vice-Chair)

CHILDREN'S MINISTRY COMMITTEE

- › Nancy Piho (Chair)

ADULT NURTURE COMMITTEE

- › Ellen Lawler (Chair)
- › Randy Elliott (Chair, beginning October 2014)

YOUTH MINISTRY COMMITTEE

- › Brooke Buchanan (Chair, June–August)
- › Mike Hammaker (Chair, through June)
- › Dave Moore (Chair, beginning in September)

LIBRARY AND ARCHIVES COMMITTEE

- › Gretchen Asmuth (Chair)

MEN'S MINISTRY COMMITTEE

- › Mike Unger (Chair)

WOMEN'S MINISTRY COMMITTEE

- › Ellen Lawler (Chair)

LEADERSHIP DEVELOPMENT

- › John Bernbaum (Chair)

CARE COUNCIL

- › Sue Lockwood (Chair)
- › Delores Ziegler (Vice-Chair)

AT-HOME MINISTRY

- › Al Duncker (Chair)

STEPHEN MINISTRY

- › Glenn Schmitt (Chair)

CONNECTIONS MINISTRY

- › Scott Nycum (Chair)
- › Jim Holt (Vice Chair)

SERVE COUNCIL

- › Margaret Gardner (Chair)
- › Herma Williams (Vice-Chair)

LOCAL/NATIONAL MISSION COMMITTEE

- › Adele Jackson (Chair)
- › Bryan Smith (Vice-Chair)

INTERNATIONAL MISSION COMMITTEE

- › Herma Williams (Co-Chair)
- › David Wallace (Co-Chair)

FACILITIES COUNCIL

- › Rudy deLeon (Chair)
- › Fred Byus (Vice-Chair)

COMMUNICATIONS COMMITTEE

- › Beth Bartholomew (Chair)

GOVERNANCE COUNCIL

- › Emmy Lewis (Chair)
- › David Mack (Vice-Chair)

DENOMINATIONAL AFFAIRS

- › David Mack (Chair)

LEGAL COMMITTEE

- › Mills Williams (Chair)

CONGREGATIONAL NOMINATING COMMITTEE

- › Randy Elliott (Chair)

PERSONNEL COUNCIL

- › Thea Bournazian (Chair)
- › Dave Schottke (Vice-Chair)

FINANCE COUNCIL

- › John Young (Chair)
- › Richard Davies (Vice Chair)

STEWARDSHIP COMMITTEE

- › John Gregg (Chair)

AUDIT COMMITTEE

- › Lew Crenshaw (Chair)



4101 NEBRASKA AVE. NW
WASHINGTON DC 20016
202.537.0800
www.nationalpres.org

“

For as in one body we have many members, and not all the members have the same function, so we, who are many, are one body in Christ, and individually we are members one of another. We have gifts that differ according to the grace given to us: prophecy, in proportion to faith; ministry, in ministering; the teacher, in teaching; the exhorter, in exhortation; the giver, in generosity; the leader, in diligence; the compassionate, in cheerfulness.

ROMANS 12:4–8

”

