



# APRIL 2021 BUILDING TOGETHER UPDATE

## OUR NEW MEZZANINE:

# THE CENTER OF ACTIVITY!

For the first time **EVER**, our mezzanine floor is united! With the former stage removed, everyone can easily reach all the rooms in the church building. In fact, we think the Mezzanine will become the core location for much of our church life together.

On the Van Ness side of the church building, we have three **MEETING ROOMS**, the new **FLOWER ROOM**, and the renovated **KITCHENETTE**. We can envision our congregants stepping off the new elevators, grabbing their coffee and heading off to Sunday School classes.

A short walk to the other side of the floor, you reach the **LIBRARY** and new Restrooms. The **NURSERY / TODDLER ROOM** is directly across from the Library, and features a kitchenette and bathroom, equipped with a pint-sized toilet for our young ones.

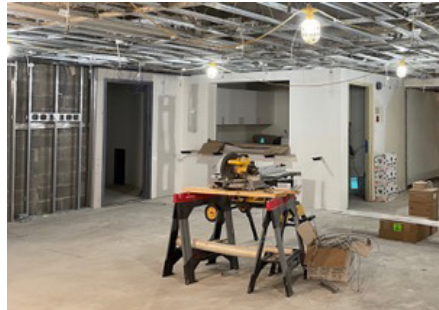
And from the center of the Mezzanine level, you can walk between the future **CENTRAL STAIRS** to reach our **GARDEN ROOMS** and **FOUNTAIN GARDEN**.



## CONSTRUCTION PROGRESS



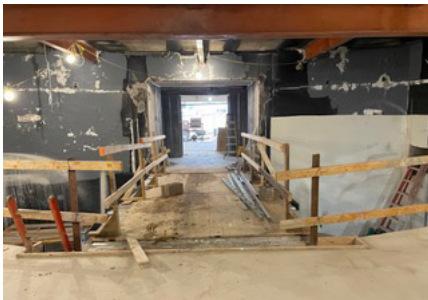
Flower Room cabinets



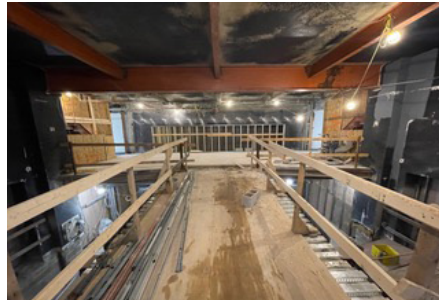
Kitchenette in Elevator Lobby



Library progress



Walkway between Central Stairs to Garden Rooms



View from the Garden Rooms back into the Church Building



Garden Rooms taking shape



# MISSION COMMITMENT



WyldLife leaders and kids enjoy a paintball outing



Phillip Ford leading worship for Young Life staff

Capital Campaign Partner **WyldLife**, the middle school thrust of **Young Life**, is grateful for NPC's prayers and financial support as they seek to model and express God's love to their young friends during COVID in Southeast D.C.

Earlier this year, recent staff hire Phillip Ford, who grew up in Southeast D.C., reached out to all of the parents and guardians of the students who were involved in WyldLife prior to the pandemic – quite a challenging task! After many unreturned calls, he finally connected with the grandmother of one of the former students. She expressed the impact WyldLife had on her grandson over the past couple of years, and immediately connected Phillip with him. This relationship has grown into a discipleship group with middle school guys who meet weekly and enjoy outdoor activities like paintball and basketball.

As they re-launch their ministry to reach out to middle school teenagers in Southeast D.C., the Young Life staff have relied upon Jesus' words: *If you are faithful in little things, you will be faithful in large ones. But if you are dishonest in little things, you won't be honest with greater responsibilities.* (Luke 16:10)

# CAPITAL \$ CAMPAIGN



We are accomplishing all this as we **BUILD TOGETHER** plus we are giving \$1 million to our Mission partners thanks to your incredible generosity!

Help us finish this inspiring project! We are ready to assist you in any way possible. Just email or call our Director of Finance and Administration Leah Skrine at [lskrine@nationalpres.org](mailto:lskrine@nationalpres.org) or (202) 537-7484.

**Email Us: [BuildingTogether@nationalpres.org](mailto:BuildingTogether@nationalpres.org)**  
Capital Project Steering Committee  
John Neely (Chair); Mary Jo Pera (Vice Chair), John Lawlah, Susie Westrup, Diane Stewart (Facilities Director), David Renwick (Senior Pastor/ex officio)