



JULY 2021 BUILDING TOGETHER UPDATE

THE GREAT OUTDOORS!

Or even better . . . it's **GREAT** just outside **OUR DOORS!** Many improvements are occurring this summer!



Dr. Renwick at the Upper Plaza glass guardrail



Garden terrace and ramp construction

The new outdoor **UPPER PLAZA** in front of the church on the Sanctuary level is nearly complete! This large, new space is available because of the new Garden Rooms constructed below. On the edge of the upper plaza is a **GLASS GUARDRAIL**, which means that everyone on the upper plaza can easily see our beautiful fountain. The planters that frame both sides of the upper plaza with soon have Ginko trees.

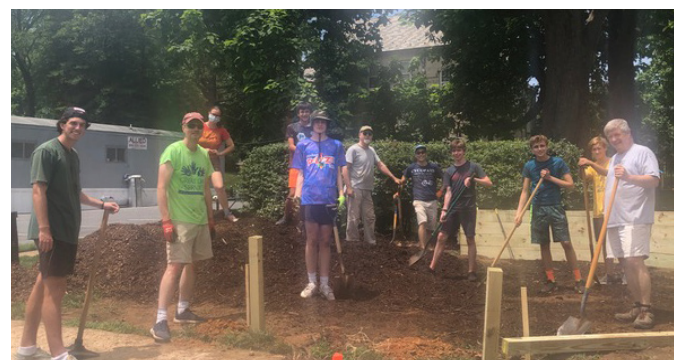
Right below the upper plaza, just outside the Garden Rooms, the new **GARDEN TERRACE, STAIRS** and **RAMP** leading up to the fountain garden are in place and soon grass sod will be added. Sidewalks have also been poured on the fountain level to enable people to easily reach that area.

On the parking lot side of the church just outside the **NEW ENTRANCE**, wide sidewalks have been poured enabling easy access to our entrance closest to the two new elevators and central staircase. Soon landscaping will be added along the walk, helping to make this entrance even more inviting.

And just outside the Youth House, the youth-requested **GAGA PIT** is nearly complete! The gaga pit was designed and constructed by several Facilities Council members and, earlier this month, many of our youth eagerly assisted leaders in assembling it.



Sidewalks at new entrance



Gaga Pit construction crew!

MISSION COMMITMENT



The **International Association for Refugees (IAFR)** uses NPC's Capital Campaign grant to provide essential services to refugees residing in Kakuma and Kalobeye camps in Kenya who were forced to flee war or disaster in their native countries. Approximately 186,000 have been resettled in Kakuma and approximately 40,000 in Kalobeye, with another 3,000 internally displaced Kenyans in Turkana West.

Tom Albinson, Founder and Director of IAFR, directs NPC's grant toward the funding of four major projects in affiliation with two other humanitarian organizations: erecting basic shelters for housing, drilling wells for clean water, providing wood and metal sheets to build churches, and supporting scholarships for five girls to attend high school.



Aerial view of Kakuma Camp



Studying at school



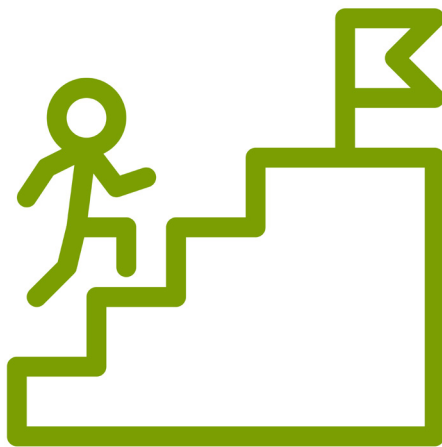
Waiting for camp services

Students in Kenya are required to pay for their own education beyond primary grades, and what education there is in the refugee camps does not lead to a high school diploma. The five girls attend boarding school in different areas of the country with the potential of receiving additional support from Lutheran World Federation to pursue advanced degrees. In spite of the additional constraints associated with Covid, the girls have made academic progress.

Our partnership with IAFR directly impacts the lives of refugees residing in the Kenyan camps.

CAPITAL \$ CAMPAIGN

THANK YOU to all that have contributed thus far to the Capital Campaign and especially to the **288 families that have paid ahead of schedule or paid above their original commitment amount!**



As expected, the construction project will be completed before all commitments are received which required NPC to borrow money against a previously approved line of credit. However, thanks to every dollar received ahead of schedule and/or above the original commitment, we were able to borrow money much later in the construction process than originally expected. More importantly, **every dollar we receive early from now until the end of the capital campaign will save NPC interest expenses on the existing loan.** We also remain hopeful that prudent project management and additional contributions will allow us to retire all outstanding debt by the end of the capital campaign.

If you not yet joined those how have committed and given to the campaign, ***now is the time!*** Just email or call our Director of Finance and Administration Leah Skrine at lskrine@nationalpres.org or (202) 537-7484.

Email Us: BuildingTogether@nationalpres.org

Capital Project Steering Committee

John Neely (Chair); Mary Jo Pera (Vice Chair), John Lawlah, Susie Westrup, Diane Stewart (Facilities Director), David Renwick (Senior Pastor/ex officio)